

SKILL AND TECHNIQUE; SELF PORTRAIT



Self portrait by Mayra Torres

Personally for me having a middle toned color in the back helped me be able to recognize if any of the hues were off or if they were correct. In my self portray I decided to use a movuy purple in order to be able to clearly see the paint. I have tried to color in paintings in a white base and it gets overwhelming and it also gets harder for me personally to be able to recognize the hues within the piece.

My self-portrait I decided to use the projector to trace my face, so I did not make a sketch about what I wanted to do. This was due to the fact that I was using the projector to create my piece. Once I had traced my face I was not sure what to do for the background, I was in a conflict because I was not sure what to do. Once I had found what I wanted to do for my background which was inspired by Frida Kahlo *Self-Portrait with Thorn Necklace and Hummingbird*. I tried to free draw it but the monkey did not come out as expected but it was fine I still liked the way it looked like. Once I was finished drawing the plants and the puma, I started to paint. I started by mixing all my skin tones, once the face was done I decided to start with the monkey and he was giving me a hard time but I had finished it. I started to do the plants which was easy for me, due to the fact that I love to paint plants.



INSPIRATION AND DEVELOPMENT OF IDEA

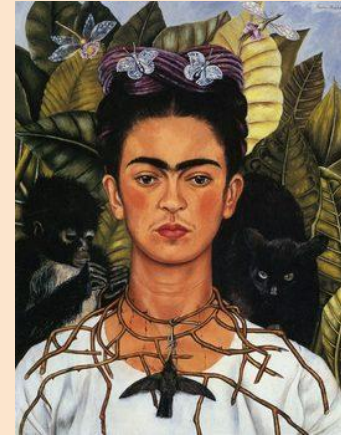
In *The Truth of Me* I was inspired by Frida Kahlo's *Self-Portrait with Thorn Necklace and Hummingbird*. I have always loved Frida Kahlo's work ever since I was little. My parents were the ones to introduce me to her work. My parents are also big fans of her work, growing up with her presence around my house made me love her. Little by little she became part of me as well as being part of my culture. So I decided to include her in my portrait because I wanted people to know that she is part of me. With her self-portrait she uses a hummingbird as a sign of hope which I also interpret it like that because I am wearing it all the time. I haven't lived a long time to experience grief but I believe that even like that using the hummingbird around me symbolizes that I will always find hope even in times where I believe like nothing is worth it.

When being introduced to the self-portrait I was excited and a bit intimidated due to the fact that it was going to be painted in this canvas. Once I was done with my own face I decided to do the background but I was in conflict because I wanted to reflect me but it was hard because every piece has its own meaning and finding something that reflected me was going to be hard. So I started to look into Frida Kahlo because I love her work, this was when I remembered about the piece that I had re-created during my sophomore year. So I decided that I wanted to use her idea because I love her dark meaning about her piece. I wanted to recreate the pain and meaning that she had in her portrait because I can relate to it.

When doing my self-portrait I really did not go through many challenges as I thought I would have and that was a cool thing to go through. Although the thing that I was having trouble with was the monkey. Even then I was more than happy with the outcome of my self-portrait.



Self portrait by Mayra Torres



Self-Portrait with Thorn Necklace and Hummingbird by Frida Kahlo

My work



Frida's work



EXPERIMENTATION AND REFLECTION

For my experimentation I decided to include oil paints. I am new to oils paints I had bought the oil paints because I knew that it would be a better blend and it took longer to dry so I was excited. I also bought a thinner so it could help it dry a bit faster since it took hours t dry. Using the oil paints was the best decision I ever had the only thing that I had trouble with was the amount of thinner I had to put, like I had said before I am new to oil paints so thinners was never something I had used. Overall my experience with oil paints was amazing.

When doing my self portrait I really did not go through many challenges as I thought I would have and that was a cool thing to go through. Although the thing that I was having trouble with was the monkey. Even then I was more than happy with the outcome of my self portrait.



Self portrait by Mayra Torres

I was very pleased with the outcome of my self portrait but even though i loved the outcome there are still things that I would change. Throughout the project I noticed some of the things I could have changed for example in my self portrait I could have focused more on the monkey he does not look the best. Another thing would be that I would have added a bit more of shadows to create more of a realistic piece. Overall I believe that the things I would change are minor so it really does not affect what I feel about my portrait.

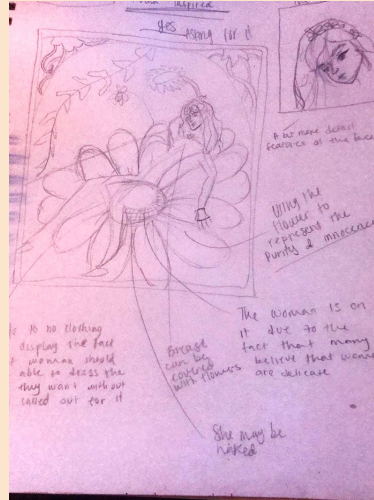
In *Self-Portrait with Thorn Necklace and Hummingbird* you can visually see that I used in reference her piece. I did a bit of my own twist to it which was that I always use the same hairstyle all the time which is a mid-pony tail so instead of making a bun I used my hair style.

DEVELOPMENT OF IDEA

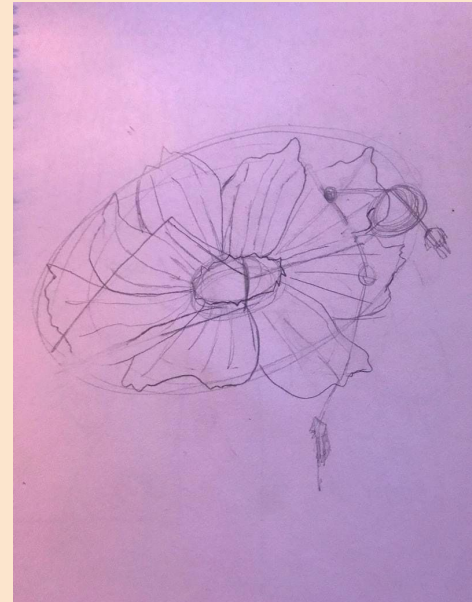
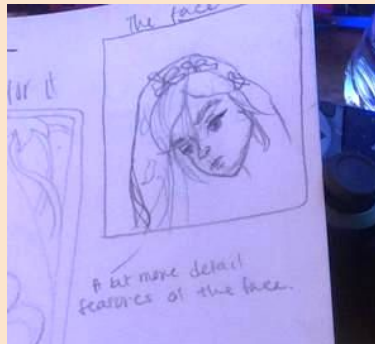
Once I had found the inspiration for my piece I then started to research references online to be able to guide myself because if I were not to guide myself then the piece would have come out un-proportional. I have found a couple of references in where I was going to use as part of my piece. I decided to sketch some of the references in order to see how they would have turned out.

In my first sketch I decided to go with the idea of using the movements with the with the position of his hands and how they were going to add some type of meaning within the painting. I wanted to be able to incorporate something with his hands to be able to give it even further meaning. But by this point I was not sure exactly what I wanted to incorporate. So I decided to make him sorta tired because men typically put up a front in order to please people and also not being themselves. Making the hands as if he is tired motion make it seem like he has had enough of what he had to deal with. So I was drawing the hand movements to see what would fit in with what I had in mind.

I decided to use flowers just to see how it were to look as well as I wanted to incorporate it in order to make if more femininity within the painting. But for this sketch I decided to draw a woman since for me this is within my comfort zone. So she is on top of a flow since I wanted to include more femininity in the piece. I then wanted to do a little color margin at the side to be able to see the colors that I could use within the painting.

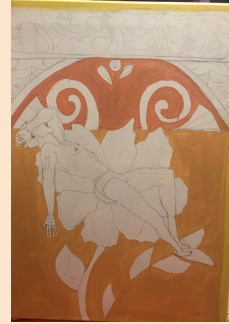
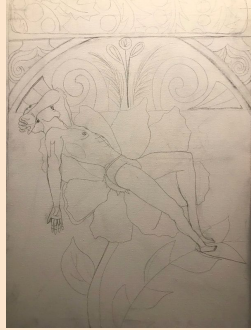


In my third sketch I decided to do a man with on top of the flower. This was because even though drawing woman is within my comfort zone I would see more within the painting if it was a man instead of a woman. With this I also decided to add a crown on my sketch although to i was contemplating whether I wanted to actually add to my piece or not because to me it didn't have as much value as I thought it could.



PROCESS OF *YOUR A MAN*

Before even starting my project I decided to look at my sketches in order to figure out which one I wanted to do and so I decided to have the hand movement from the first sketch because it was what I had in mind with my project, but also have him looking away because it would have been the best fit for my piece, and also because when you are vulnerable you are more shy and scared. At first it was a bit hard to work with to position the man correctly in the canvas as I did in the sketch.



As I started my project I decided to gesso my canvas since I accidentally bought a canvas without gesso. So I decided to give it a thick layer of gesso so I would not need another coat and have it warp my actual piece. Once gessoing my painting I decided to let it dry and continue to think about the color scheme within my painting. Once doing so I then started with the outline of the inner face by this I mean the eyes, nose and the mouth. I was not give it detail until after I was actually color it in. Next came the hair and the hands. Once the sketch was done with I decided to start coloring the actual piece so I decided to gather all of my acrylic paintings. I started out by coloring in the body once I finished blending in the colors in with the shades colors I decided to move on to the background. With the background I decided to paint it an orange brown. Once doing so I decided to color in some flowers to make the bigger flower that the man is sitting on bigger. Once done with the smaller flowers I decided to go in with the blue and go in and color in the big flower. Once shading in the flower I also decided to start and work in the border and color in with yellow. Finishing it up with a detail in the top middle of the painting to give it a feel of even more flowers.



EXPERIMENTATION AND REFLECTION

I do believe that there were certain parts in the project that I had experimented with. This would include the fact that I used a man because I was stepping out of my comfort zone in order to be able to make my piece.

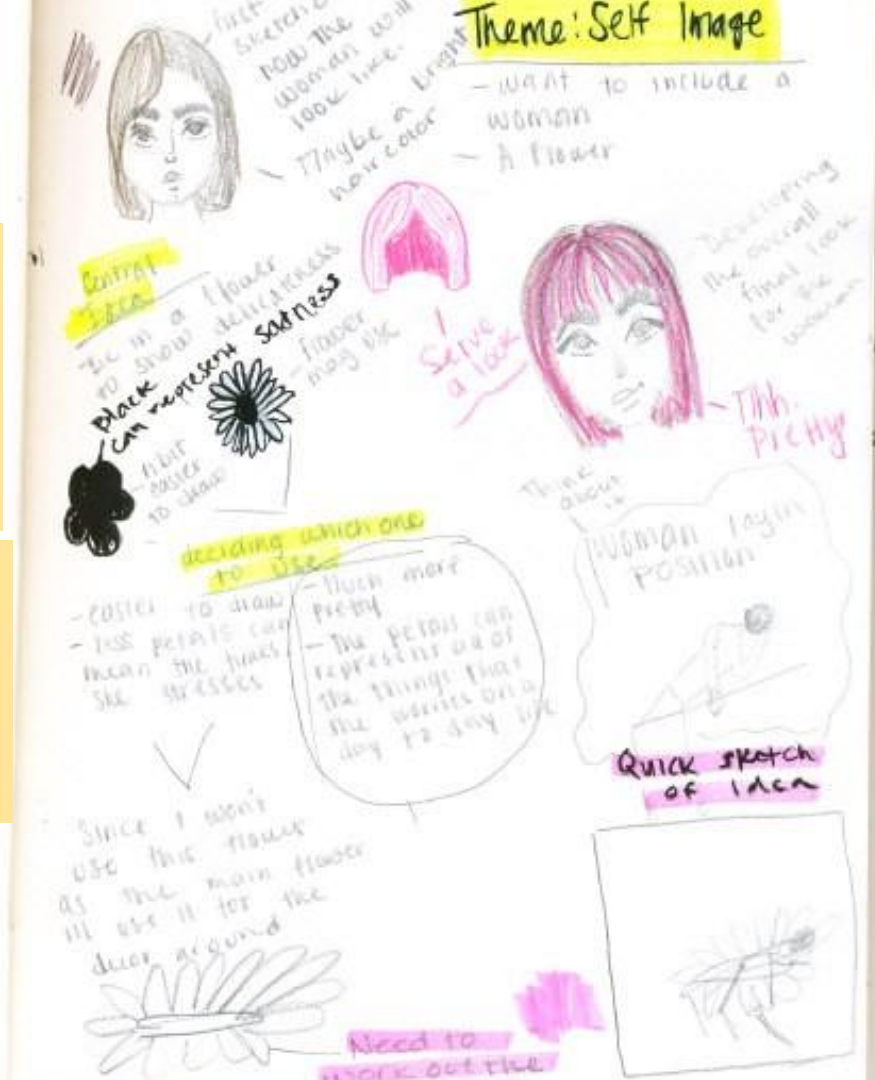
Overall I was pleased with how my piece came out a couple of things that I would change would be to be able to try and be able to use better color scheme in the future.



I had create a top layer to experiment with different designs but i didn't like the look of it so I decided to cover it up.

I noticed that when positioning my character in my painting was difficult, not this was because I have to be able to make him seem like he is lying on the flower. Also the pastel colors used could have been more corresponding as I am not so content with how they look together.

One of the main things that it is noticeable with my inspirations and my piece would be that both use the movement of the bodies as well as the use the similar colors. Once of the differences would be that they aren't exactly the same in Four Season they use color and in Reverie was more dark.



INSPIRATION



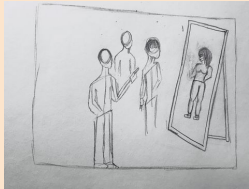
Mirror by Paul Delvaux



Girl Before a Mirror
by Pablo Picasso



While searching for inspiration I came across *Mirror* by Paul Delvaux. The way that I had interpreted the painting was something interesting to me this was because the mirror depicted her true vulnerability. It was something that I wanted to also depict for Ahmed this is because I also wanted to show that the mirror depicted his vulnerability. Since, he was born a woman but transformed into a man because her father wanted to.



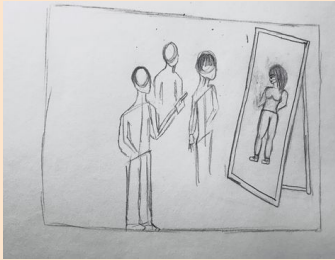
In the artwork of *Girl Before a Mirror* by Picasso was another of my inspirations. It was one of my inspirations because once again you can see the idea of the mirror and that's basically the big point that I have on my dry point. The *Girl Before a mirror* is about showing the reflection one has about themselves which was a great thing because I wanted to interpret how Ahmed reflects himself.

In literature we were introduced on a book called *The Sand Child* while reading this book it was more than noticeable that the main character whose name was Ahmed was through identity issues. Now these issues were mainly about a secret his father had kept and that was that he had changed Ahmed's sex in order to have a son and give all his fortune to. These issues brought back the thought of self image this is because he wasn't pleased with his body and everything he had gone through it kinda made it difficult for him to live at peace specially the fact that he had to live thinking he was a man but in reality was a woman. So when we got introduced to dry point I already had in mind what I wanted to display this time. I wanted to display what Ahmed had gone through in his mind and how he viewed himself. Specially the fact that he was carrying this burden his father made him carry. Since this is a big thing in the LGBT community I wanted to make it more in a modern time so this way, when people would view this piece they can see themselves through it.

PROCESS AND EXPERIMENTATION



For experimentation I wanted to double roll my print. By this I mean that I rolled my print once in the printing press and then I decided to roll it once again to see the outcome of my print. I noticed that the print came out messier than the other prints. It didn't double image which was a good thing but it created a bolder image to the outer part of my print but towards the inner part it did not it was way lighter which I found interesting. Some of the small details that I scratched came out looking way harsher than I had intended to. For example, in the eyes had a light reflecting but because I double rolled it it was not showed the whole eye had back ink.



Before I started scratching my dry point plate I had to peel the plastic from both sides. Since we were not able to erase lines I was very nervous to mess up. So I decided to trace my sketch onto my plate. Then when I was done I was doing minor details on my plate I saw that the plate was very plain and I wanted to create a background very similar to the Hospital Visit by Kathe Kollwitz. So I decided to go ahead and create the similar background. Once I was done scratching the plate I went to ink the plate. I filled a container of water and added a thicker piece of paper which was provided by our art class. While I waited until the paper softened I added a small amount of ink on to the plate. I also was ripping paper in small pieces because I was getting ready to remove the ink of the plate. It took a while to remove the ink from the plate but once it was removed from the unwanted areas, I took the paper out the container and dried it with a rag. Once dried I added my plate facing the paper and then I was on my way towards the printing press. I added my print in the printing press and rolled the plate, once I rolled it I checked how my plate came out.

SKILL AND TECHNIQUE;

When it came to trying to think of ideas for my tryptich was having a bit of trouble now this was because we had to do something that had to connect all three paintings as well as to make it have a story that would relate to it. So in a way I wanted to make a story about me since I still want to keep my theme which is self image. I wanted to see how others viewed me and I wanted to draw out what others thought of me. So at this point i also decided to ask my friend to describe me in one word many said that i was funny and while I agree with this, I could not think of a way in how to interpret the idea of funny. So then OI also told them what else they thought of me and they said that I play a lot of video games. This is true I do believe that i spend most of my time playing in some type of console. So I decided to depict myself in my bedroom playing a game.

The next group of people that I asked was my teachers. I did not ask all my teachers but overall i got a good response from them they did say that I did my work and had good grades. So I drew my self with a good grade in one of my assignments. The last person that I wanted to depict on was myself, this is because overall I do believe that knowing who I am is very important aspect to me because it is the person who I am and will become.



INSPIRATION AND DEVELOPMENT OF IDEA

While doing my research I came across *Tryptich 1976*, by Francis Bacon. When looking at this piece I was able to interpret in a way three versions of someone. Now this was something that I wanted to do with my paintings. Since I wanted to be able to depict three versions of me from the beginning this was able to give me almost an idea of how I wanted to see. In this piece there is also very intriguing about it almost grotesque towards the end, I wanted to be able to depict similar feelings toward my piece.

In my tryptich I wanted to depict what other view me, I tend not to let other people's opinions get to me. Yet, I wanted to see how other people viewed me as. So I went around to some of my closest friends and teachers to describe me and so I used their opinions as inspiration to my painting. I drew myself playing games which was what my friends thought of me and then the other painting is what the teachers thought of me which was that I am a good student. The third painting is me because I also wanted to incorporate what I think about myself and that was that I am human and I am myself.

Another piece in where I was heavily inspired by was the *The three studies of Lucian Freud*. This painting was an inspiration to my own artwork due to the fact that I wanted to do three versions of myself. by looking at this piece I also was able to understand how I wanted to do it. Now I was inspired by this peace yet, I wanted to put my own twist on it which was to place myself sitting in a couch, instead of a chair.

Tryptic IDEA Keep in mind Theme

want to be able to include myself

THEME
self image


maybe include

- future ??
- Present ??
- Past

The first painting


- Me and doing a hobby I love to do
- Play Video Games!!

Quick sketch




The second painting

- Draw myself in what people believe I am
- Quick sketch
- Make happy



Third painting

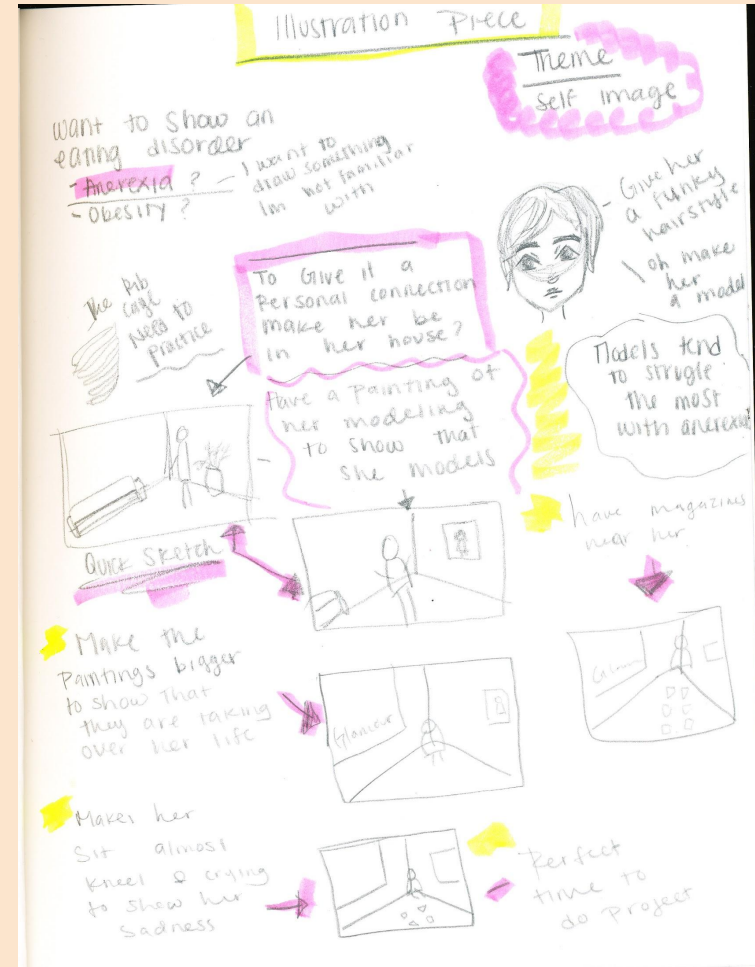
- Draw future self
- NOT too much detail to give the effect that who knows what the future holds.
- Add stars to represent success/self love



PLANNING AND DEVELOPMENT

In this project was that I decided to use markers. I thought that I had not liked the way that the markers had looked when I was finished I was just going to cover it with acrylic paint. Yet I decided to keep the marker do to the fact that I actually had like the outcome of the marker and the effects it had.

While planning my second illustration I decided to continue on the story that I had from the beginning. I decided to do this because in this way I was able to interpret two different scenarios with the same idea. In my first illustration I decided to do a confident woman admired by many and so it ended up being a model on the runway. For this particular piece I decided to do more of the dark side of many admirable models. This was eating disorders because it is heard quite often that models are anorexic or at the verge of it I wanted to deliver something similar that had both ideas included. My first thought that came in mind about combining these two ideas was a model standing in front of a mirror and seeing herself as something completely different and because this is true in many aspects I also noticed that this type of scene is overused by many. I wanted to be able to create something that was not as obvious to depict as the looking in to the mirror one. So I kept thinking on what I was able to illustrate, something else that had came in mind was the fact that I wanted to put a woman in her living space crying in the corner. The reason in which I decided to illustrate that model in the the corner of their home was because in a way when we are home and alone were are more vulnerable compared to when we are in front of people. So I wanted to include her in the corner of her apartment crying in the corner, I had also made her smaller than any other object in her apartment. This was due to the fact that she sees herself as someone who is not good enough, I also wanted to incorporate a big mural of her because even though she is blind to her success the rest of the world is not. She views herself as something low but she doesn't understand that many people admire her. I also incorporated a trail of magazines with models in the front and a couple of them are her in the cover. Its a trail because she is trying to look away from the thought of trying to be like the rest but because there are a great amount of them, she is looking at them over her shoulder because even though she can try it will always be there for her.



PROCESS AND DEVELOPMENT



I wanted to continue the story to my previous illustration, I wanted to portray that even though you are confident in front of everyone else it does not mean that you are confident to yourself. So my painting did compose of the fact that many models go through eating disorders due to beauty standards.

Throughout the process I was a bit afraid but I started to overcome it. I was very pleased with the outcome, but one thing that I would change would be that I should have made the magazines way bigger to reflect that she is smaller than the magazines because she hasn't met her goals and still thinks that the magazine controls her. I did not think about this myself, this was suggested to me when I was getting criticism by the professor. Which made me think that she was right and she helped me give a bigger meaning towards my piece.

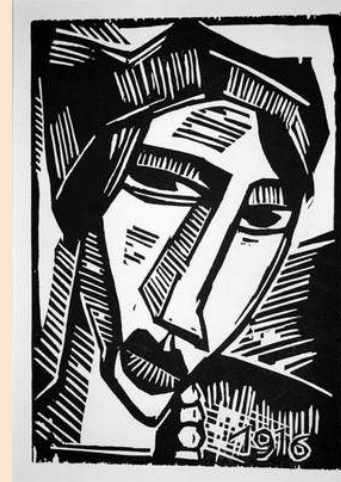
I decided to start with a couple of my sketches, my illustrations were able to help me choose the one that represented my idea the best and because they were both a bit different it was kinda hard to choose which one was going to be the best. Once I had chosen which one I had liked the best I had decided that I was going to go with the runway model sketch. After the meeting with the instructor of MIAD I was able to discuss my ideas with this project he had helped me by giving me advice to add almost a sentimental value now this was said because as it was previously mentioned, when viewing a model they usually display this confident woman that knows how to do her job. I took all his advice and added it to my piece, once it was sketched I decided to paint the illustrations and I used both acrylic paints as well as markers. Once I was done and satisfied with one of the sketches I decided to start redrawing it on my illustration board. Once done I decided to start acrylic painting my illustration board I also started to use my markers as well even though I really did not use the markers due to the fact of the fear I already had to use them.

INSPIRATION OF *DISCONNECTED*

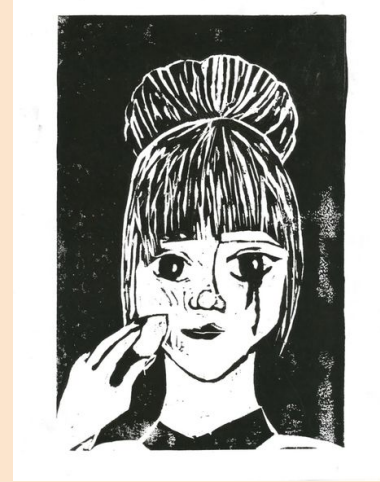
One of my main inspirations would have to be Käthe Kollwitz this was because we had learned about her last year so I had prior knowledge in her work so I decided to choose her as my main inspiration. She was also one of my main inspirations because most of her artwork delivers that emotion aspect of art. I really wanted to incorporate something similar in where I deliver almost like a touching to the viewer's eye. Another artist that had inspired me was Karl Schmidt-Rottluff particularly the Head of a Woman that was a big inspiration because it portrays a woman in the front and that really had me thinking as to what I wanted to do and because the theme that I had chosen was self image I decided to also portray a woman in my block print. So I decided to also incorporate The Widow by Käthe Kollwitz and I wanted to portray that feeling you get when you see her german expressionism I mostly wanted the people to react similarly to my block print as to when you see her german expressionism. I chose these two particular artist pieces because they both correlated to my piece that I had in mind.



The Widow I by Käthe Kollwitz



Head of a Woman by Karl Schmidt



My work

Schmidt's work



REVIEWING AND REFLECTING PROCESS

My block print was inspired by Kathe Kollwitz but not only that it was also inspired about the raw emotion she delivers in *The Widow*. I wanted to deliver more of an emotional aspect so I decided to create a piece with a message that most people can relate to. Yet at the same time I needed to connect to my theme of self image and it was pretty easy because everyone tries to fit in with the crowd. Once I can up with what I was going to do The process was really simple and a great experience to try out new things. Some of the things that I struggled a bit was keeping the lines crispy and clean, also I had problem with the carving although it wasn't the biggest problem it was still an issue. Some of my strengths were the fact that I was able to get my to look like my sketch this may sound silly but I was feeling nervous because I had some details and the block point is carving large areas of the board but I was able to finish my piece. Something I would improve in is the inking part this is because for most part it was either to heavy in ink or too little and this was the problem I was looking for a specific look which I did get but the outlines were not as crisp as I would like them.

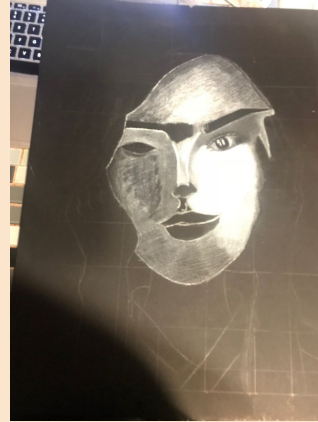
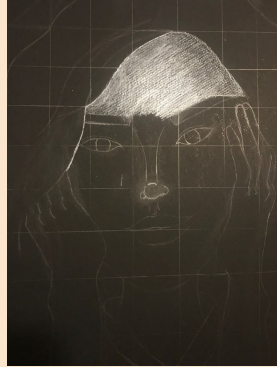
When doing my block print something that I had notice was that I could have been cleaner with the edges of my print. Also something that I noticed was that I didn't carve that deep and you are able to see some of the places that I did not carve to deep in where the ink got through.



In the Head of Woman it is obviously that both Karl Schmidt- Rottluff and I used the head of a woman as part of our piece. In *The Widow* it is also noticeable that both Kathe Kollwitz and I used emotion to deliver our message. In the head of woman was more of an abstract look to it as for me I had more of an anime girl. In the Window you can see that she uses the grief of an after a husband's deaths as where I use the emotion of society standards and the feeling with it.

PROCESS AND DEVELOPMENT

Before even starting my project I decided to look at my sketches in order to figure out which one I wanted to do and so I decided to have the hand movement from The Scream but also have her smiling because it would have been the best fit for my piece. At first it was a bit hard to work with charcoal because I was not used to working with it



As I started my project I decided to gesso my canvas since I accidentally bought a canvas without gesso. So I decided to give it a thick layer of gesso so I would not need another coat and have it warp my actual piece. Once gessoing my painting I also decided to scan my painting and blow it up in my computer I did this in order to be able to get portions in place. I continued on by measuring the template and creating a grid on my paper this was done so it can also help me with portions. Even though I was using a reference I decided to draw a grid in my piece because this way I can get the eyes and nose and the mouth within portions. Once I had the grid on place I decided to sketch out the actual picture reference into my piece. I started out with the outline of her whole head I did have to fix a bit of it just because to me it did not look right. Once doing so I then started with the outline of the inner face by this I mean the eyes, nose and the mouth. I was not give it detail until after I was actually color it in. Next came the hair and the hands which I did not pay much attention to and just sketch a quick overview of what it would be.

EXPERIMENTATION AND REFLECTION

I do believe that the whole project would be my experiment now this is because I have never really used charcoal at all especially to create an artwork. I also learned through out the way that you need a fixative spray so the charcoal would not smudge all over the place. I also learned that you can't mix color pencils with charcoal because the charcoal will not color anymore, also that even when you try to erase color pencils the wax is left over which seems like common sense but to me it was something that I truly did not know.



Some of the things that I noticed about doing the piece is that it was easier to blend with a napkin than with a blender stick. It took me less time to get my final piece, I am content with my overall piece there there are some things that I do wish to improve on which would be to have started to blend with a napkin since the beginning. My blender stick has been overused a lot so the blending was not the same as it was in the beginning. Also I do wish that I should have started with another board so I would not have to keep the color pencil but I only had one board. Even though I didn't like certain things I do enjoy my piece in an overall state.



You can see that the blending did not blend accordingly making the piece be a little patchy in certain places.

Even though I did not like it because of the texture that was left behind by the color pencil. I continued on shading and blending on my project once I got to the eyes that's when I would start adding detail to the piece it was much easier that way because I was not overwhelmed from the beginning



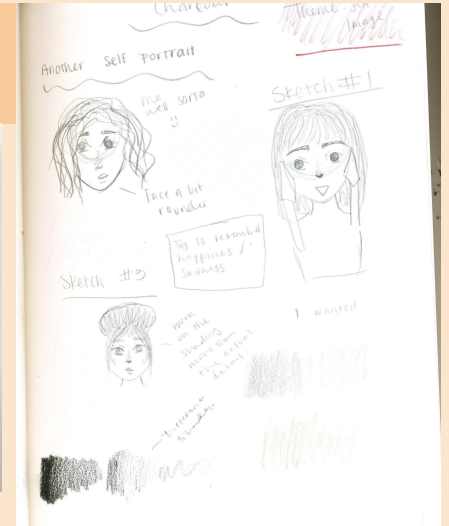
Since the charcoal would not blend the way I wanted it to the I decided to use a white color [pencil but the thing was that it left with streaks.

PLANNING AND DEVELOPMENT

Once I had found the inspiration for my piece I then started to research references online to be able to guide myself because if I were not to guide myself then the piece would have come out unproportional. I have found a couple of references in where I was going to use as part of my piece. I decided to sketch some of the references in order to see how they would have turned out.

In my first sketch I decided to go with the idea of using the movements with the hands from the painting The Scream. I was a bit skeptical on whether I wanted to do that or use the way the mouth was placed on the character. By doing so I had also think back on my concept of this piece and that was that I was depicting a woman that is now relieved by the things she had gone through. So if I were to place the mouth in my piece the way it was placed in his piece then I would have a woman that would have looked more scared than anything so that was out of the table.

In my second sketch I decided to also use the mouth just to see how it were to look and I did not like it so I left the girl alone with the mouth but I did incorporate the hand gestures because that way you can see that she had stress in her life. My next thing that I wanted to see is the mouth and I keep coming to this because it is something that I do believe is important within the art piece because it can change the face expression of the piece. So I also sketched a girl smiling and that seemed to fit the face rather nicely. I was debating whether exaggerating her mouth so I did because I do think it would give it more of an effect.



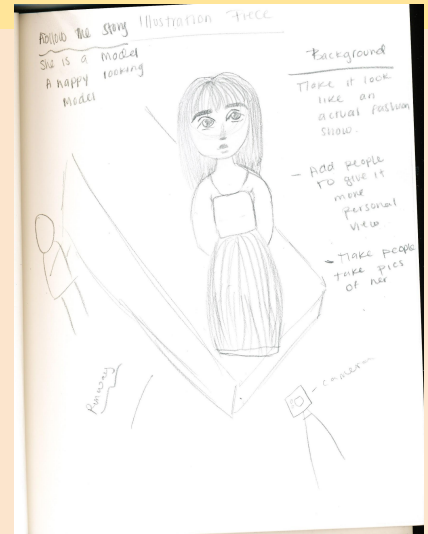
In my third sketch i was working more on shading than anything I wanted to be able to understand how to shade properly on paper. This was looking nicely on my sketch but rather later found out that on the material that I was using the pigment was not the best so I decided to stop my project and sketch another girl and shade her in which the charcoal on paper was so beautiful and the blending was the best part.

SKILL AND TECHNIQUE ;

Once I had chosen that I was going with the idea I decided to start with a couple of my sketches. While creating this sketches I was not as detail as I would have wished for the simple reason that I wanted to be able to produce my illustrations before the instructor from MIAD would have arrived. My illustrations were able to help me chose the one that represented my idea the best and because they were both a bit different it was kinda hard to chose which one was going to be the best. Once I had chosen which one I had liked the best I had decided that I was going to go with the run way model sketch. After the meeting with the instructor of MIAD I was able to discuss my ideas with this project he had helped me by giving me advice to add almost a sentimental value now this was said because as it was previously mentioned, when viewing a model they usually display this confident woman that knows how to do her job. With this being said he advised me to add people looking up to her and to also have them taking pictures. I was also advised that I should put a girl taking a picture because it show a sentimental value from persona that admires this big icon in the fashion world. I took all his advice and added it to my piece, once it was sketched I decided to paint the illustrations and I used both acrylic paints as well as markers.



In these illustrations I wanted to do something I was always mainly scared about which was markers. There was a point in my life were I used to love coloring with markers but now I don't mainly because they can look messy if not used properly. So I wanted to use markers in this illustration because I wanted to see how the piece was going to come out as if I were to use markers.



INSPIRATION AND DEVELOPMENT OF IDEA

Due to the fact that nowadays technology has taken over the world. It was easier to find newer artist that have created digital collages. During my digital collage I was exposed to many of these talented artist. Yet, one of the artist that had caught my attention was Sebastian Onufszak. He was one of the artist that had heavily inspired my piece. Sebastian Onufszak is an illustrator, graphic designer, and a direct and is based in Germany.



In his piece Portrait de Femme it is seen that the woman has openings in her face and I truly loved this technical design. I loved it because I was able to put it in my theme which is self image. Another thing that really inspired me about this particular piece was that it had objects all around. I was able to use this idea in my digital collage because I did the same but about the things that had an impact on who I am as an individual.

He also had another piece that I was heavily inspired by, this piece is The Strain. This was heavily influenced in my piece due to the fact that I loved the way that the tree gave it have such emotions. It reminded me of my childhood when I used to live by a cemetery and it had this big old tree that I would always sit by and eat sandwiches. So I decided to visit this old tree once again and I took a picture which was used for the background of my digital collage. I mashed together two of his pieces because together they created a meaning to my art. I decided to keep the background dark and my actual front ground very colorful. His piece The Strain is more of a dark colored piece while his Portrait de Femme was more colorful. So once again I wanted to use that technique that he was using for both of the pieces and mash them together to create my piece.

REVIEWING AND REFLECTING PROCESS

One of the things that I noticed in my painting was that it did not have as much depth as I wanted it to. It could be because I was not as much experienced with watercolors than with other mediums. It was harder because the paint was really watery and I was stressing with messing up that I did not put so much depth in the painting. As well as I wasn't the sure which one were complimentary colors to one another so adding the shadowing to the face and overall was a bit harder that I had expected.

In the painting Blossom I was inspired by Jacqueline de Leon. I used many of her paintings as an inspiration due to the detailed backgrounds that she usually creates. Like many of her paintings I also wanted to include more of a nature aspect.



Overall I was pleased with how my piece came out a couple of things that I would change would be to be able to try and be able to figure out the right way to use watercolors. One of the main things that it is noticeable with my inspirations and my painting would be that both the use of plants to reflect the meaning. In all the pieces you can see the vulnerability of a reflection of the actual plants.

I have used watercolors before like towards the middle of freshman year, but not in a way to blend in skin tones so that was a challenge, I was experimenting with water colors due to the lack of knowledge that I have. I decided to look up YouTube videos to help me out but no matter how many videos I looked up it was hard to go along with them I just ended blending one but not adding depth or anything for that matter in the painting.

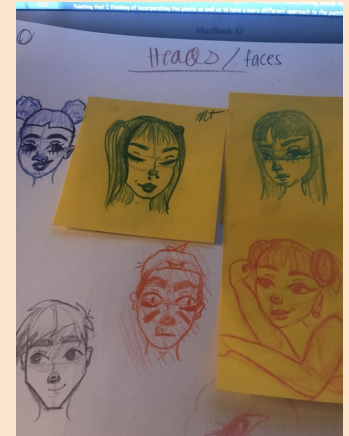
PLANNING AND DEVELOPMENT

Since I really already had an idea of what exactly I wanted to create, my sketches were about trying to figure out her facial expressions. For most part I wanted to incorporate my main theme which was portrait. In this sketch the girl is sitting in a stool and I wanted to have the background with a blossom tree. I wanted to be able to depict the purity with the blossoms.

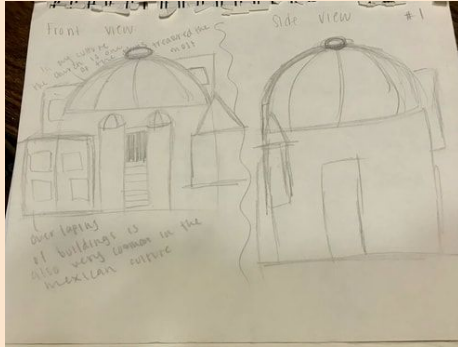


In my second sketch I decided to give it detail to the facial expression and so I decided to sketch out many faces by reference. This was done in different color pencils because I am most comfortable with the use of color pencils for sketching. Once I was comfortable with freely sketching faces I decided to start sketching the face I wanted which was in a sticky note posted in the sketch above.

Before I started to paint with my watercolors I decided to sketch out my painting. I decided not to add the houses in the back because it was not part of my focal point so I decided not to include it. I decided to get a cup of water and started to get my paints activated to start painting. Due to the fact that I have not used water colors in such a long time it was something that I was not used to. Blending the colors to create the skin tone was more difficult than expected due to the lack of knowledge. After painting I decided to outline and for outlining I used a Micron pen. It was the right amount of thinness in order to get the fine lines. I started to only outline the wooden fence but after doing so I decided to go ahead and outline her face and after that I just finished it by outlining her whole body.



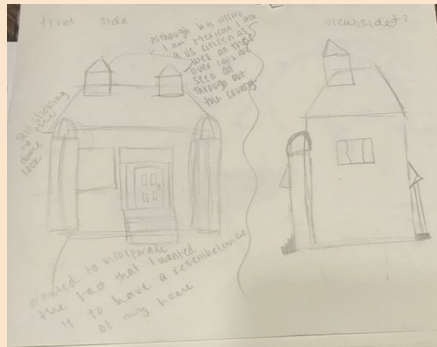
INSPIRATION AND DEVELOPMENT OF IDEA



In my first sketch I wanted to create a building that was a home, yet it would give out almost a church feeling. Due to the fact that my culture revolves heavily in faith I wanted to be able to incorporate the dome look that many of the churches tend to have. I also wanted to incorporate the overlapping look that many of the traditional houses have this was because I do tend to like that look that many of the "pueblos" have. Even though I have not personally been able to cherish the look many of these house have I did incorporate it. I wanted to be able to keep the dome look but not so much the look of a church because I wanted my building to have a feel like home.



This is the third sketch that really caught my eye. I took a bit longer with this sketch which was a bit odd due to the fact that I don't tend to take long in my sketches. The end result to me was amazing, which is why my building is based on this sketch.

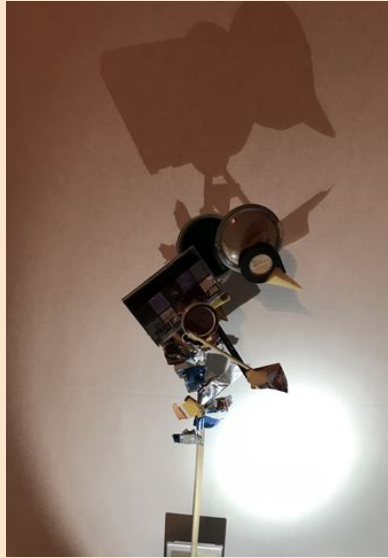


This would be the second sketch that I had chosen. There was something particular about this house that made it feel like home. The reason as to why this made it feel like home was because of how typical this house is with a twist. This house looks to be like the perfect little American house, it would look like the houses that I would be able to see while passing my Neighborhood. In this sketch I wanted to incorporate the cylinder domes like the previous sketch but as I continue on with many of my sketches I decide to leave the look and stick to a more modern look of a dome and combine it with a porch.

REVIEWING AND REFLECTING PROCESS

Overall I was pleased with how my piece came out a couple of things that I would change would be to change the size of the tail and I also believe that if I were to make the stomach a bit bigger would also make the piece look nicer.

One of the main things that it is noticeable with my inspirations and my mixed media would be that both use light in order to create the shadow of the piece. Something else that they both use would be rubbish I would be saying this because the makeup that is use din my project is makeup that was planned to be throned away. The difference would be that they use animals to create the shadow and I made a shadow of a type of animal.

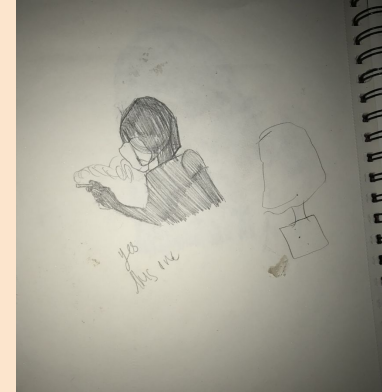


Overall I am very content with the out come of my project this is due to the fact that it took a long time to assemble. Its also something I am proud of because it helped me how to manipulate light and be able to use simple thing for instance makeup to create art with light. Although, I did enjoy the outcome there are some things that I would change this would include the tail of the bird I believe it is too thick for the bird. The reason as to why I ended up leaving the tail was because I was lacking material to use so I wanted to keep it.

In my mixed media piece *Conquering* is a piece that displays what we have conquered in society and how far we have come. It also represents the self image of the people have been fighting along in the long battle of gender roles. This piece was heavily inspired by Sue Webster and Tim Noble who have created amazing shadow sculptures.

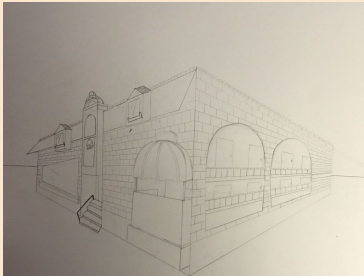
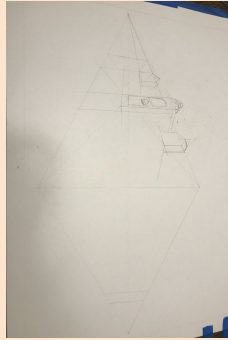
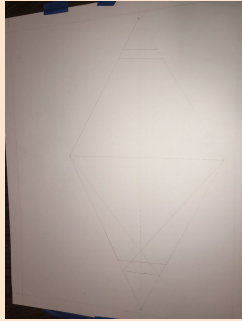
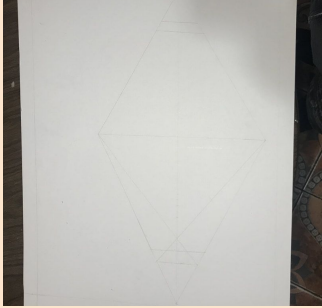
INSPIRATION AND DEVELOPMENT OF IDEA

When we were introduced to the project I was a bit overwhelmed due to the fact that I have never made anything like it. so coming up with what I wanted to do was actually harder than I thought due to the fact that there was so much to choose from. We did get a presentation informing us and giving us examples on what we could do with the mixed media project. One of the slides consisted of the shadow sculpture and I was very astonished with the artworks from Sue Webster and Tim Noble. So I decided then that I wanted to create a shadow sculpture, I wanted to also continue with my theme which is self image. So I started sketching some of the drawings my first drawing was about a girl smoking, I decided to depict smoking as an addiction which would be interpreted into my addiction to makeup. I decided to change my idea to something that I believed that would fit my theme which is self image in a way that would be more relatable. That's when I thought about a woman looking up because it would show a woman's confidence. In a way I was still not content with that sketch so I decided to free draw and I came up with a bird. I wanted to use the bird as a symbol of freedom and I used makeup to create the bird to interpret how freely makeup has been. Makeup is used by all genders, it has come a long way. The tree itself looks to be dry it almost looks like it is dead and barely any leaves on it this is due to the fact that slowly we as a community are defining barriers in society.



In my mixed media piece *Conquering* is a piece that displays what we have conquered in society and how far we have come. It also represents the self image of the people have been fighting along in the long battle of gender roles. This piece was heavily inspired by Sue Webster and Tim Noble who have created amazing shadow sculptures.

SKILL AND TECHNIQUE;



When planning what I was going to design was a bit tricky I now had an idea of what I had intended to do but was not sure as to what exactly I felt like was right for me. One of the ways in where I am able to display what I truly tend to draw is by doodling. I make many sketches and narrow them to three of the ones that catch my eye. Before sketching I decided to plan of the the three main things that had fit in my culture. So I decided to stick with faith, childhood, and American. I wanted to create something that would incorporate all this qualities while also being able to create something that catches the eye. So I began to doodle quick sketches that I believed could fit my main categories.

With my process I wanted to design a building that I could be able to relate to it in a more cultural way. So I decided to start sketches because by doing sketches I would then be able to choose and pick things from the sketches that would stick out to me. I tend to make quick sketches, these sketches consist of 2 min or less I tend to do this because it helps me focus on a bigger picture than to focus on detail. This also gives me time to be able to make as many of sketches as I need in order to be able to choose the best ones in the bunch.